

AN10920

Using CEC with TDA19989

Rev. 01 — 19 April 2010

Application note

Document information

Info	Content
Keywords	HDMI, CEC internal clock calibration, CEC data registers, contiguous CEC read, write, message transfer
Abstract	This application note provides important advice to ensure that the Consumer Electronic Control (CEC) feature in the TDA19989 operates correctly



Revision history

Rev	Date	Description
01	20100419	Initial version

Contact information

For more information, please visit: <http://www.nxp.com>

For sales office addresses, please send an email to: salesaddresses@nxp.com

1. Introduction

The TDA19989 is a 150 MHz pixel rate HDMI 1.3a transmitter with 3 × 8-bit video inputs that includes an embedded feature which enables it to support the Consumer Electronic Control (CEC) protocol.

CEC operates over a bidirectional single-wire bus allowing communication of CEC-enabled AV products, connected by HDMI, over the home-appliance network using a single remote control.

This application note explains the exact requirements for the following functions that must be observed to ensure the TDA19989 CEC feature operates correctly:

- CEC internal clock calibration
- CEC data registers read/write

2. CEC internal clock calibration

The clock to the TDA19989 CEC module can be supplied either:

- externally from an external oscillator source

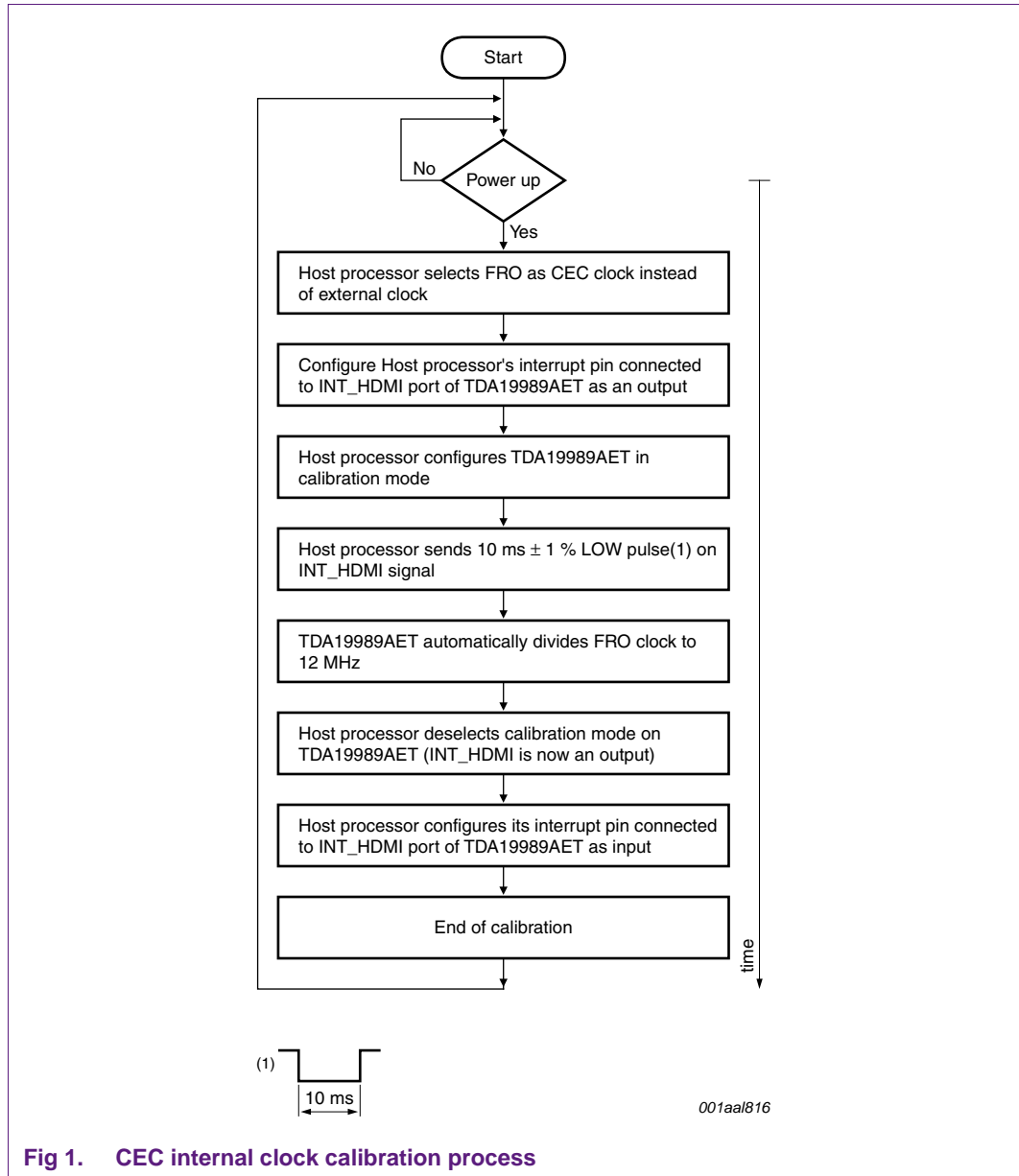
or

- internally from the TDA19989's dedicated internal Free Running Oscillator (FRO)

If the internal clock is used, it **must** be calibrated every time the TDA19989 is powered up.

The process for calibrating the internal clock is shown in the flow chart [Figure 1](#). Note that it is imperative that the steps shown in the flow chart must be followed exactly to ensure that the internal clock is calibrated correctly.

Calibration functions controlled by the host processor are located in the software driver supplied with the TDA19989; for information on these functions you will need to refer to the *HDMI CEC User Manual*.



3. CEC data registers

CEC message data must be transferred contiguously and not in fragments. This requires the CEC data registers in the TDA19989 to be written or read in one communication sequence between a START bit and a STOP bit. The CEC data registers are located at addresses 07h to 19h.

Message transfers **must** always start from the first CEC data register CDR[0] at address 07h.

The maximum CEC message length supported is 16 bytes.

3.1 Writing to the CEC data registers

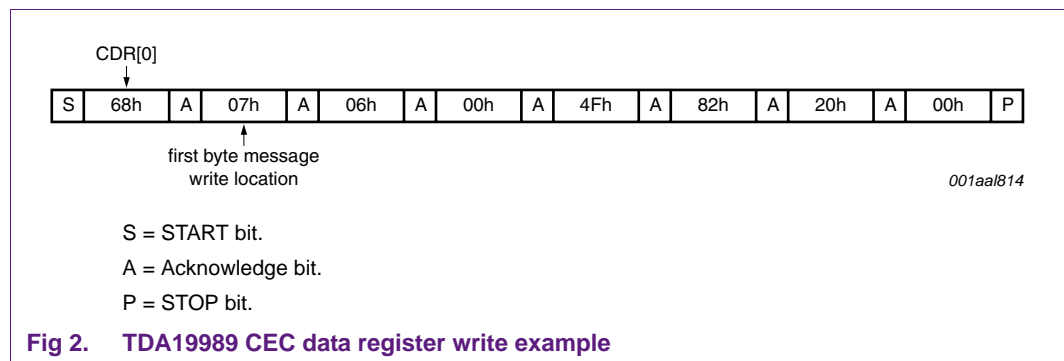
All CEC data write operations must start by addressing the first CEC data register CDR[0] at address 07h. CDR[0] indicates the number of CEC register bytes that are to be written to accommodate the complete message. These bytes are written contiguously.

The minimum CEC message length allowed is 3 CEC register bytes. Any message specifying less than 3 CEC register bytes is invalid.

If the number of CEC data registers actually written is less than the number indicated by CDR[0], the message is ignored and no acknowledge message is sent.

If the number of CEC data registers written is greater than the number indicated in CDR[0], the message is processed when the write to the last CEC data register specified in CDR[0] has completed. The extra message bytes are ignored.

If the message length indicated in CDR[0] exceeds the maximum number of CEC data registers available, the message is processed when the write to the last CEC data register has completed. The extra message bytes are ignored.



3.2 Reading the CEC data registers

All CEC data read operations must start by addressing the first CEC data register CDR[0] at address 07h. CDR[0] indicates the number of CEC register bytes that are to be read. These bytes will be read contiguously.

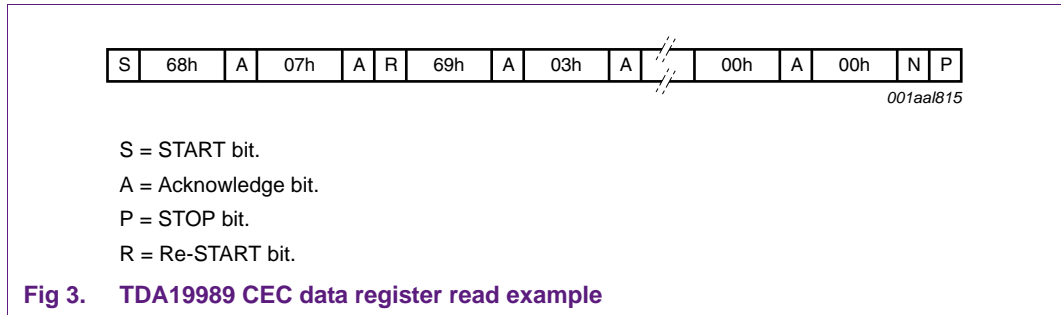
When the CEC data registers contain a valid message, line INT is set and the Status register INT bit is set to logic 1.

If the CEC data registers are read when line INT is not set, the value in CDR[0] is 0 which indicates there are no bytes to be read. Any further attempts to read before a STOP condition returns the value 00h.

If the host performs a write operation and then starts a read operation before resetting the Address Pointer register, the read operation starts automatically from CDR[0].

If the read operation stops before all of the specified CEC data registers are read, line INT is reset, the message is discarded and can never be read.

If the number of read CEC data registers is greater than the number indicated in the first CEC data register, the read value is 00h. Line INT is reset when the last valid CEC data register of the current message has been read.



4. Abbreviations

Table 1. Abbreviations

Acronym	Description
AV	Audio Visual
CEC	Consumer Electronic Control
HDMI	High Definition Multimedia Interface

5. Legal information

5.1 Definitions

Draft — The document is a draft version only. The content is still under internal review and subject to formal approval, which may result in modifications or additions. NXP Semiconductors does not give any representations or warranties as to the accuracy or completeness of information included herein and shall have no liability for the consequences of use of such information.

5.2 Disclaimers

Limited warranty and liability — Information in this document is believed to be accurate and reliable. However, NXP Semiconductors does not give any representations or warranties, expressed or implied, as to the accuracy or completeness of such information and shall have no liability for the consequences of use of such information.

In no event shall NXP Semiconductors be liable for any indirect, incidental, punitive, special or consequential damages (including - without limitation - lost profits, lost savings, business interruption, costs related to the removal or replacement of any products or rework charges) whether or not such damages are based on tort (including negligence), warranty, breach of contract or any other legal theory.

Notwithstanding any damages that customer might incur for any reason whatsoever, NXP Semiconductors' aggregate and cumulative liability towards customer for the products described herein shall be limited in accordance with the *Terms and conditions of commercial sale* of NXP Semiconductors.

Right to make changes — NXP Semiconductors reserves the right to make changes to information published in this document, including without limitation specifications and product descriptions, at any time and without notice. This document supersedes and replaces all information supplied prior to the publication hereof.

Suitability for use — NXP Semiconductors products are not designed, authorized or warranted to be suitable for use in medical, military, aircraft, space or life support equipment, nor in applications where failure or

malfunction of an NXP Semiconductors product can reasonably be expected to result in personal injury, death or severe property or environmental damage. NXP Semiconductors accepts no liability for inclusion and/or use of NXP Semiconductors products in such equipment or applications and therefore such inclusion and/or use is at the customer's own risk.

Applications — Applications that are described herein for any of these products are for illustrative purposes only. NXP Semiconductors makes no representation or warranty that such applications will be suitable for the specified use without further testing or modification.

NXP Semiconductors does not accept any liability related to any default, damage, costs or problem which is based on a weakness or default in the customer application/use or the application/use of customer's third party customer(s) (hereinafter both referred to as "Application"). It is customer's sole responsibility to check whether the NXP Semiconductors product is suitable and fit for the Application planned. Customer has to do all necessary testing for the Application in order to avoid a default of the Application and the product. NXP Semiconductors does not accept any liability in this respect.

Export control — This document as well as the item(s) described herein may be subject to export control regulations. Export might require a prior authorization from national authorities.

5.3 Licenses

Purchase of NXP ICs with HDMI technology

Use of an NXP IC with HDMI technology in equipment that complies with the HDMI standard requires a license from HDMI Licensing LLC, 1060 E. Arques Avenue Suite 100, Sunnyvale CA 94085, USA, e-mail: admin@hdmi.org.

5.4 Trademarks

Notice: All referenced brands, product names, service names and trademarks are the property of their respective owners.

6. Contents

1	Introduction	3
2	CEC internal clock calibration	3
3	CEC data registers	4
3.1	Writing to the CEC data registers	5
3.2	Reading the CEC data registers	5
4	Abbreviations	6
5	Legal information	7
5.1	Definitions	7
5.2	Disclaimers	7
5.3	Licenses	7
5.4	Trademarks	7
6	Contents	8

Please be aware that important notices concerning this document and the product(s) described herein, have been included in section 'Legal information'.

© NXP B.V. 2010.

All rights reserved.

For more information, please visit: <http://www.nxp.com>

For sales office addresses, please send an email to: salesaddresses@nxp.com

Date of release: 19 April 2010

Document identifier: AN10920_1